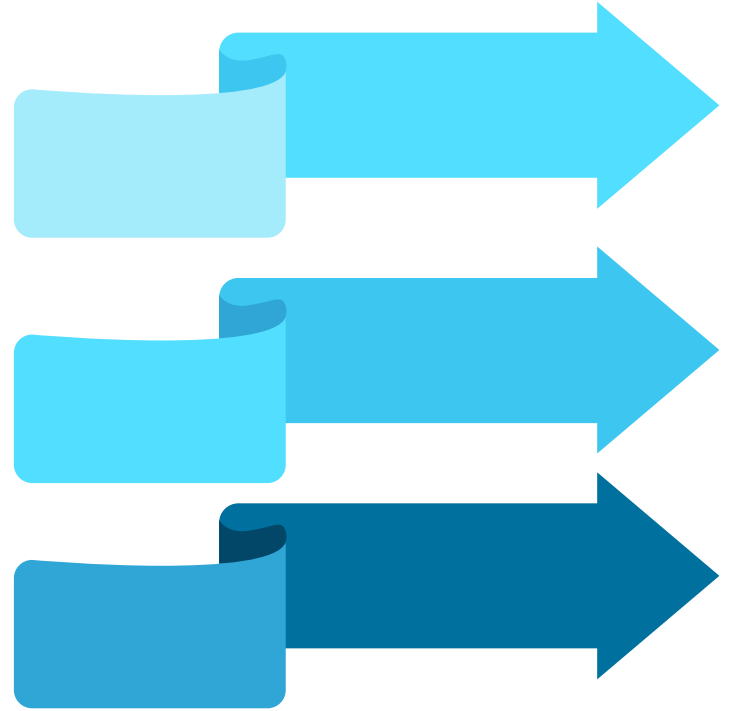
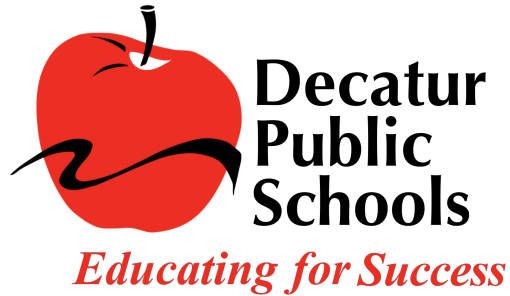


# Dennis Lab School

## Short-Term Plan

BOE Update · July 11, 2023



# Short-Term Plan: Alternative Education Program for 2023-24 School Year



**K-12 Garfield  
Learning Academy**

**to Self-Contained  
Wing @ SDMS**

- The 160s hallway at Stephen Decatur Middle School will be used to create a self-contained wing for the K-12 Alternative Education Program.
- Self-contained wing will consist of 11 classrooms, office space, bathrooms, a staff workroom, and an eating area for staff and students. Staff and students will enter and exit through the North entrance at SDMS. Students arriving late will be escorted to class upon arrival.
- All staff will follow GLA to the self-contained wing at this site. Classrooms and student assignments are the responsibility of GLA administration.

# Short-Term Plan: Alternative Education Program for 2023-24 School Year



- Currently, GLA will remain on the same tier with the same bell times.
- Confirmed bell times will be announced once all moves are completed.



# Stephen Decatur Middle School

## for 2023-24 School Year

**SDMS 7<sup>th</sup> & 8<sup>th</sup>  
Grades**



- Stephen Decatur Middle School staff and students will remain at Stephen Decatur and occupy the remaining parts of the building.
- A door will be installed to separate the hallways so there is no access from the the SDMS side of the building to the GLA side of the building.
- All SDMS students will now enter through the South entrance near the gym.
- The front North entrance will only be used for GLA students and staff. Students arriving late will be escorted to class upon arrival.

# Stephen Decatur Middle School

## for 2023-24 School Year



- Currently, SDMS will remain on the same tier with the same bell times.
- Confirmed bell times will be announced once all moves are completed.

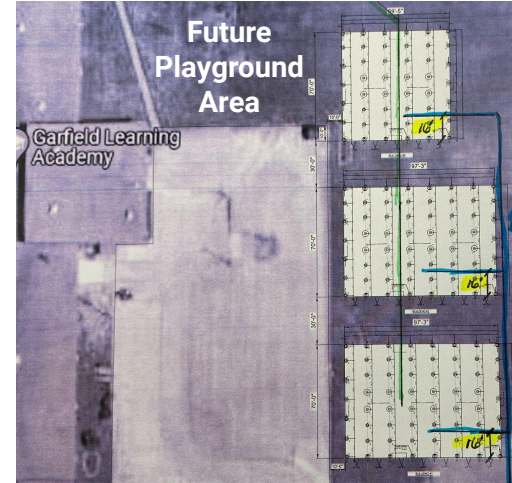
# Short-Term Plan: Dennis Lab School for 2023-24 School Year

**Dennis K-8 to  
Garfield Location**



- Grades K-8 will move to Garfield Learning Academy site, with sixteen (16) modular classrooms added to accommodate the number of students.
- All staff and administration from both Dennis Lab School locations will follow Dennis to the GLA location.
- Classrooms and student assignments are the responsibility of the Dennis administrative staff.

# Short-Term Plan: Dennis Lab School for 2023-24 School Year



- Currently, Dennis will remain on the same tier and bell times, but will need more buses for transportation. A survey will go out to all Dennis families to gauge whether or not students will ride the bus to and from school all year or will be car riders.
- Confirmed bell times will be announced once all moves are completed.
- Update on progress for modulars and parking for staff

# Timeline for Setup at Garfield Location

Approximate timeline for modular classroom installation:

1. Installation of electrical, water, and sewer – Started June 27 and continuing
2. Modular vendor engineers working on footing layout and sizing plan – Hoped to receive by July 7
3. B&G installation of footing for first 6-classroom modular – Anticipated start on July 8 and then continuing to next 6-classroom and 4-classroom modular locations
4. Modular vendor delivery of first 6-classroom modular – anticipated July 14-17
5. Ameren Illinois set power pole and install new electrical service – Anticipated July 14-17
6. B&G hook-up of electrical, water, and sewer; install all networking, technology, & IT devices, all fire alarm systems, and all telephone systems to first 6-classroom modular – Anticipated start of July 19 and continuing until all is complete
7. Modular vendor delivery of second 6-classroom modular OR the 4-classroom modular – anticipated early August
8. Modular vendor delivery of final classroom modular – anticipated mid-August
9. Anticipated completion of installations – August 31
10. Anticipated completion of move-in – September 3





# UPDATES: What does this mean for Dennis families?

**Dennis K-8 to  
Garfield Location**



- All Dennis students & staff at one location
- Playground will be added
- Dennis athletic programs remain intact
- Transportation available for ALL students
- Security staff will follow to this location and external security cameras will be added to monitor modular classroom area
- Delayed start date
  - Discussion with union leadership continues to determine what this looks like for students and staff
  - Discussion with ISBE & ROE

# UPDATES: Where Are We Now?



**Staffing**



**Administration**



**Transportation**



**Relocation**



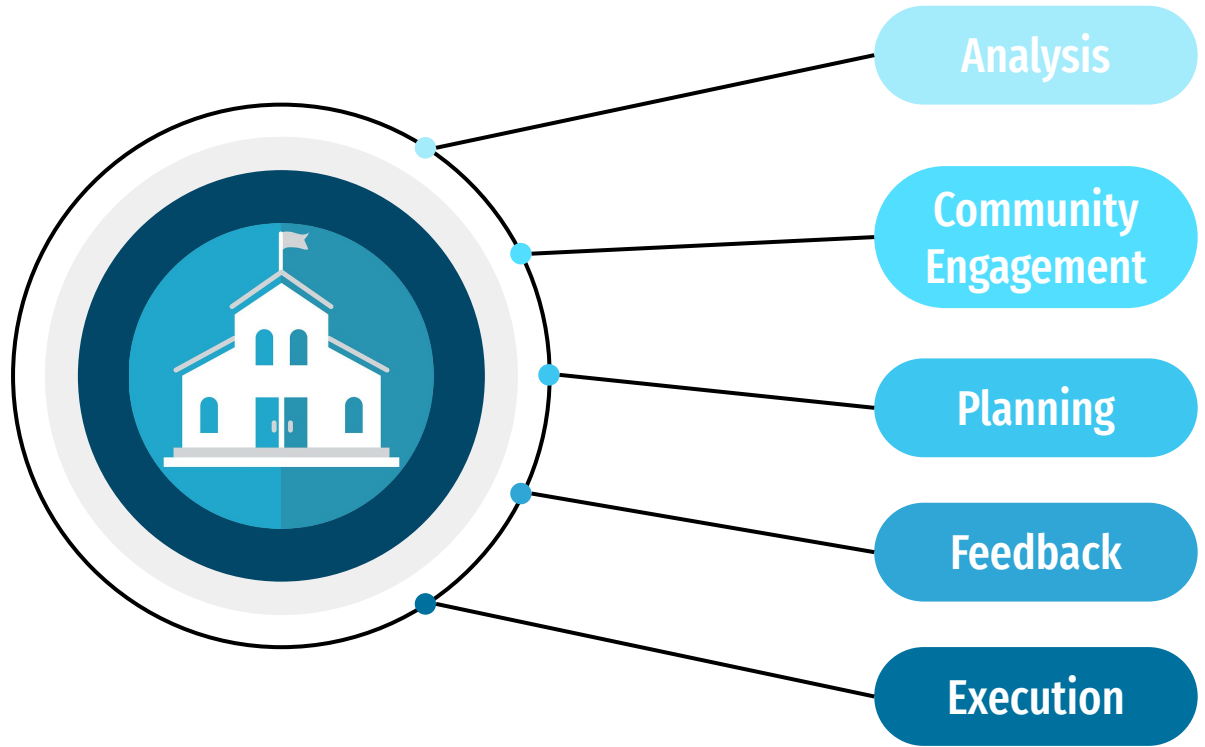
**Food Service**



**Security**



# **RECAP: Long-Term Master Plan for All District Facilities**



# Thank You!

BOE Update · July 11, 2023

